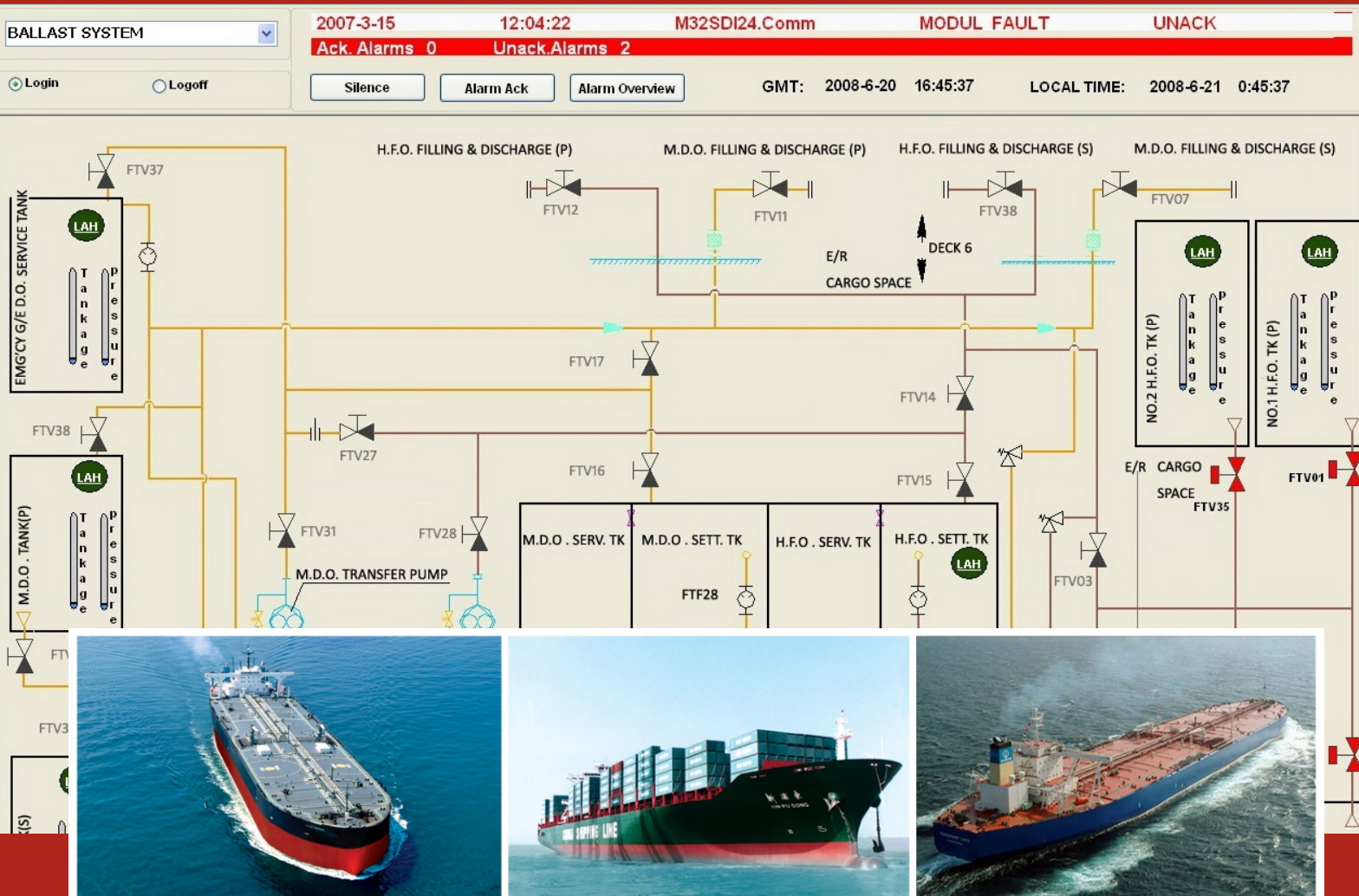


VRCS 1000

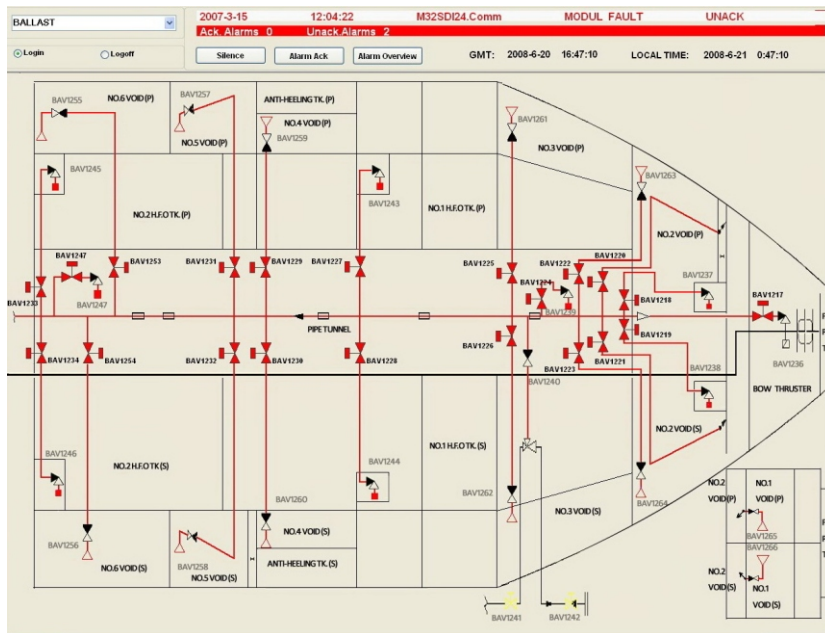
Valve Remote Control System



Jumho Electric

VRCS 1000

Valve Remote Control System



Main Benefits

- Cost Efficient
- User-Friendly
- Safe and Reliable
- Modular and Flexible
- Easy Installation

Valve Control

The VRCS 1000 is designed to meet the high demands of marine applications.

- Valve control for tank, bulk, container
- Valve status display and alarm monitoring
- Integrated level measuring system

System Architecture

The VRCS 1000 is divided into four parts, the architecture is as follows:

- Software: Human Machine Interface
- Reporting
- Remote Display Unit
- Solenoid Valve Control Cabinet

General Information

Jumho Electric Valve Remote Control System represents experience, well-proven technology, and new up-to-date features. It can control up to thousands of valves simultaneously with easy-of-use PC human interface (HMI).

Software: human machine interface

Jumho Electric designed universal valve control system using graphical programming language and provide easily operations to different valves.

Software: HMI

Main functions:
 Valve Control, Status Display
 Sequence or Single Control
 Level Gauging
 Alarm Management
 Tank Overview
 etc.

Reporting

Alarm & Event Printers for:
 Alarm and Event Data
 Real-time and History Data
 Graph and Overview
 etc.

The Modular Cost Efficient Solution

Reporting

An alarm and event printer is connected with the computer for data logging. Software is based on high performance database design and printer can easily choose different report to print.

Remote display unit

Remote display units are distributed around the ship according to your specific requirements.

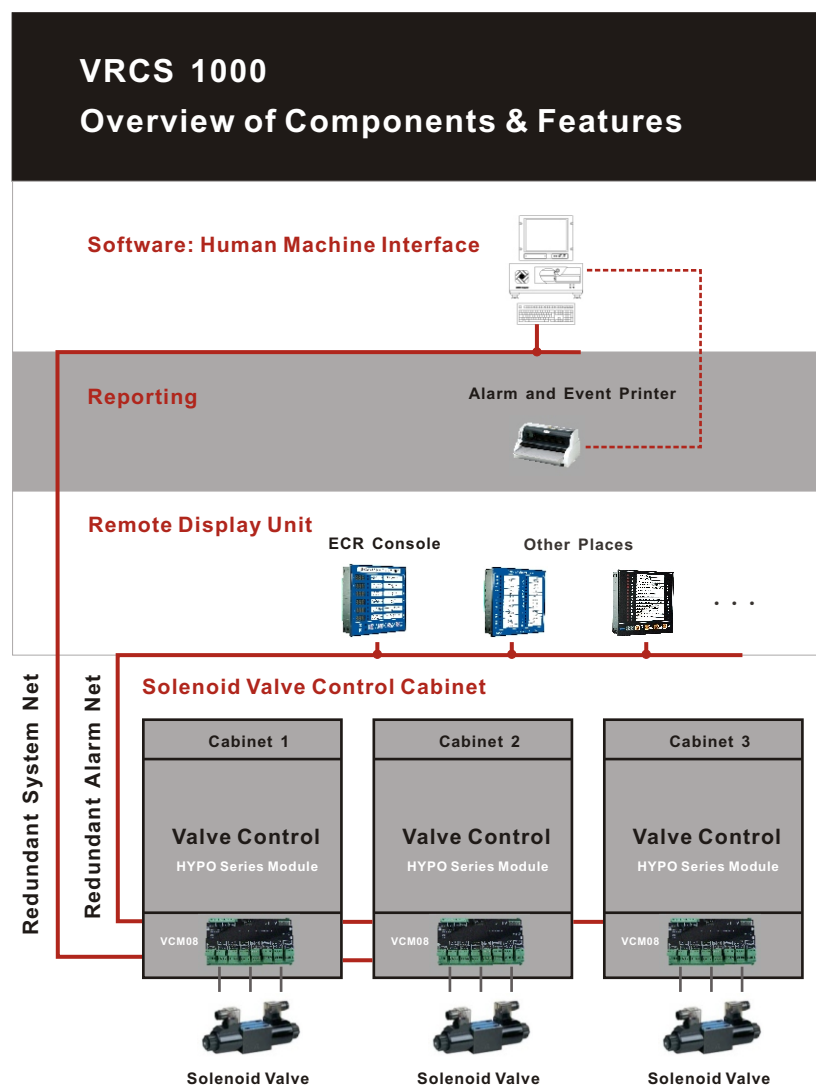
Solenoid valve control cabinet

The solenoid valve control cabinet receives control signals from the computer system which activates the solenoid valves. The cabinet consists of VCM08 and other I/O modules.

VCM08 is 8 channel remote valve control module using embedded technology, each module can control 8 solenoid valves separately and make total system very easy to connect or debug.

Modular and Cost Efficient

The VRCS 1000 is a module based system. The hardware is formed by HYPO series standard modules minimizing the spare parts and reducing cost for your ship.



Remote Display Unit

Intelligent Instrument
Data Remote Display
Alarm Management
HYPO-D2200, X2200, X3200, X4200 Optional
Redundant Communication
etc.

Solenoid Valve Control Cabinet

Independent Units
Embedded Valve Control Module VCM08
HYPO series Analog I/O Module, DIO Module
Distributed Control
Redundant Communication
etc.

Competence in Marine Automation

Partnership



Jumho Electric provides innovation, high-quality products and system solutions for marine and industrial applications worldwide.

Jumho Electric is always keen on new innovations.

Jumho Electric Marine's product lines consist of

- Alarm and Monitoring System
- Valve Remote Control System
- Electro-pneumatic Level Gauging System
- Vapour Alarm System
- Remote Data Acquisition Module
- Intelligent Instrument

all with strong positions on the market.

Company Culture

- Honesty
- Innovation
- Never give up!

Company goal

- To be the global leader in the industry

Our opening platform combines different products together and also provides customized solutions.

We strive to give our customers highest possible benefits.



ISO9001:2000



GL



CCS



高新技术企业证书

Jumho Electric



Headquarter

JUMHO ELECTRIC(GUANGZHOU)CO.,LTD

7th Information Building, No.111 Science City, Guangzhou
510663, China

Phone: +86 (20) 6280 0488

+86 (20) 6280 0486

Fax: +86 (20) 6280 0487

E-mail: jumho@jumho.cn

www.jumho.cn

JUMHO ELECTRICAL(HK)CO.,LIMITED

Rm 601-2 Chuk On Building.23 Mercer Street.Sheung Wan. HONGKONG.49-51.7B2-0308

Phone: (852) 2425 7777

Fax: (852) 2854 2875

E-mail: jumho@jumho.cn

www.jumho.cn